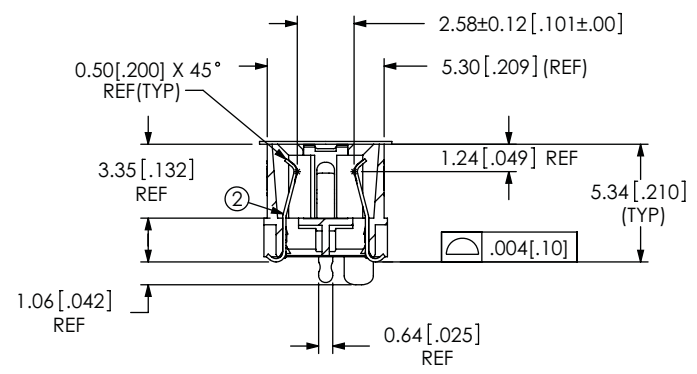
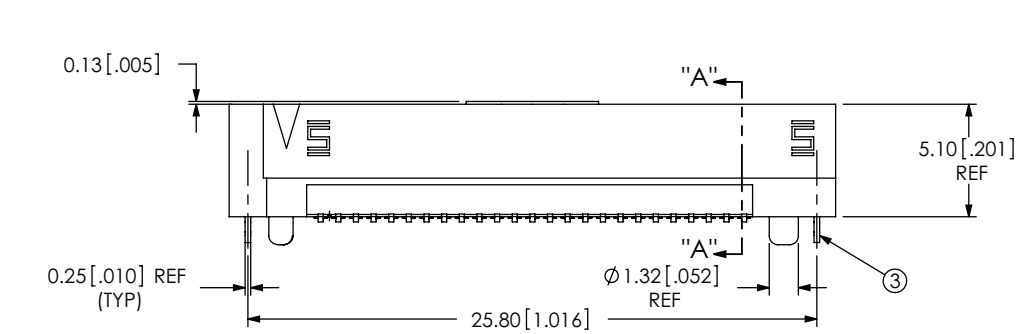
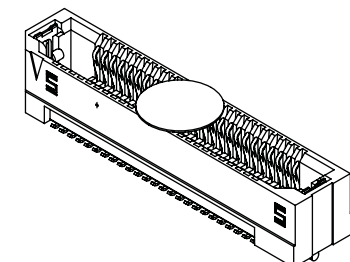
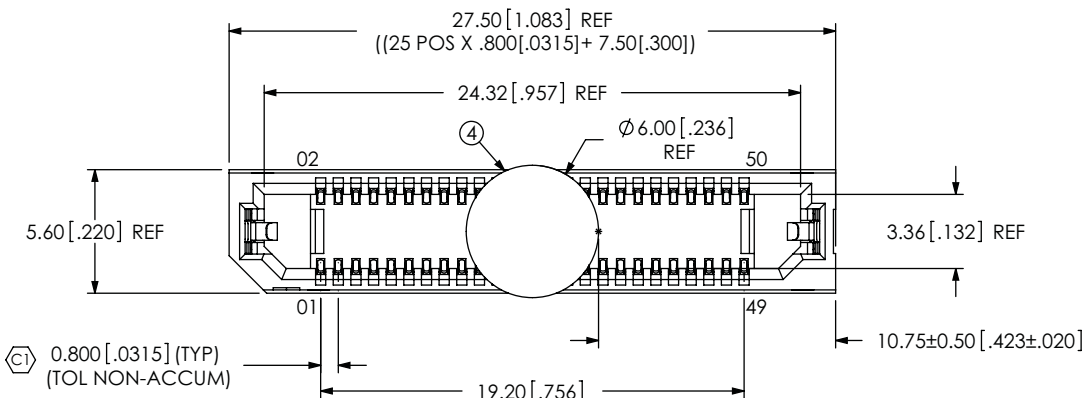


REVISION

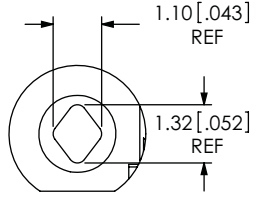
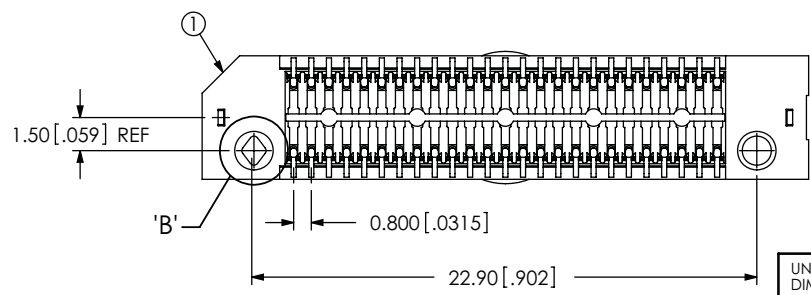
A	TW	J HENRY
6/12/2009	ECN-111851	
RELEASE FOR PRODUCTION		

NOTES:

1. SET UP ASP PART NUMBER FOR INDUSTRY STANDARD.
2. Ⓞ REPRESENTS A CRITICAL DIMENSION.
3. BURR ALLOWANCE: 0.015[.038] MAX.
4. MINIMUM PUSHOUT FORCE: .5 LB.
5. PARTS TO BE PACKAGED IN TAPE AND REEL.



SECTION "A"-"A"




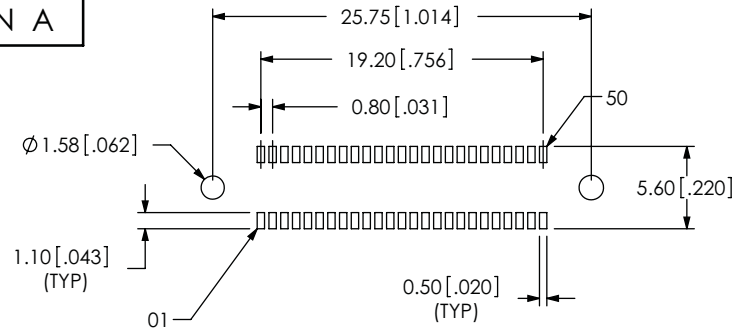
DETAIL 'B'
SCALE 6:1

ACCEPTANCE OF DRAWING
 ACCEPTED WITH DEVIATIONS LISTED

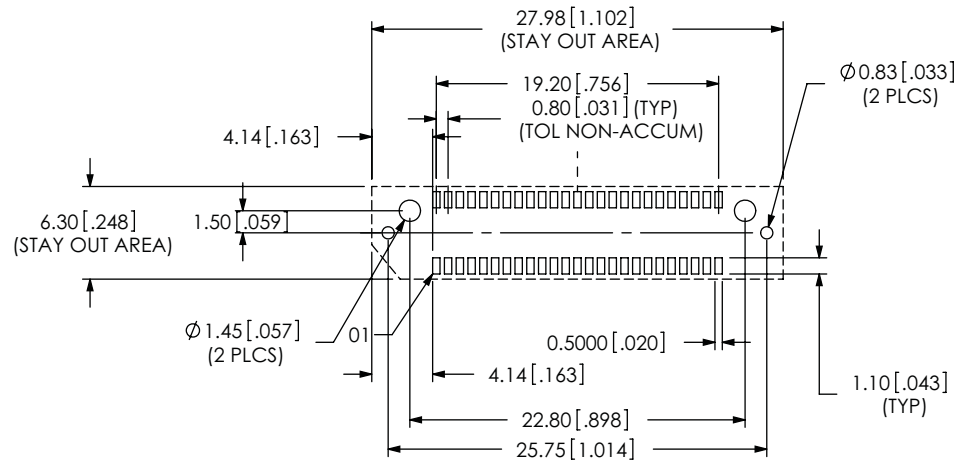
DATE: _____
 COMPANY: _____
 CUSTOMER SIGNATURE: _____
 PRINTED NAME: _____
 PHONE No: _____
 FAX No: _____

ITEM NO.	PART NUMBER	QUANTITY	MATERIAL
1	ERF8-025-05-0-DV-L	1.0000	VECTRA E130i, COLOR: BLACK
2	C-211-05-0-S	50.0000	BEcu, ALLOY 390 HT
3	WT-30-01-F	2.0000	BeCu, #25, 1/2 HT
4	K-500-300	1.0000	POLYIMIDE FILM
5	CT-ERF8016MS	1.0000	CONDUCTIVE POLYMER

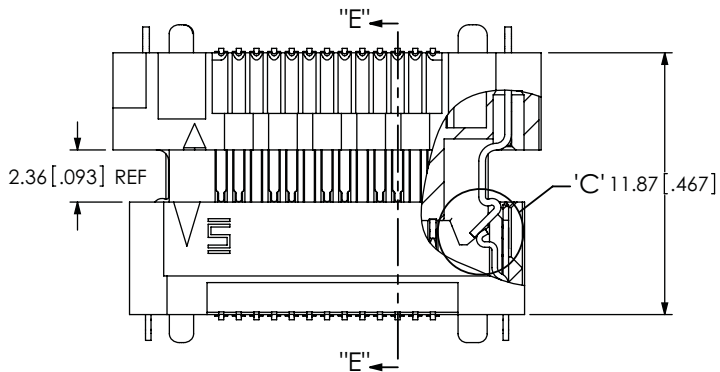
UNLESS OTHERWISE SPECIFIED, DIMENSIONS ARE IN MILLIMETERS TOLERANCES ARE: DECIMALS ANGLES .XX: ±.3[.01] 2° .XXX: ±.13[.005] .XXXX: ±.051[.0020]	PROPRIETARY NOTE THIS DOCUMENT CONTAINS INFORMATION CONFIDENTIAL AND PROPRIETARY TO SAMTEC, INC. AND SHALL NOT BE REPRODUCED OR TRANSFERRED TO OTHER DOCUMENTS OR DISCLOSED TO OTHERS OR USED FOR ANY PURPOSE OTHER THAN THAT WHICH IT WAS OBTAINED WITHOUT THE EXPRESSED WRITTEN CONSENT OF SAMTEC, INC.		
		520 PARK EAST BLVD, NEW ALBANY, IN 47150 PHONE: 812-944-6733 FAX: 812-948-5047 e-Mail: info@SAMTEC.com code: 55322	
DO NOT SCALE DRAWING SHEET SCALE: 1:0.333333		DESCRIPTION: .8MM EDGE RATE SOCKET ASM	
PLATING: CONTACTS: CONTACT AREA: .000030 GOLD OVER .000050 NICKEL REMAINDER: .000200 REF TIN OVER .000050 NICKEL WELD TAB: .000003 GOLD OVER .000050 NICKEL		DWG. NO. <h2 style="text-align: center;">ASP-148422-01</h2>	
F:\d\wg\sw\asp\148000\ASP-148422-01.SLDDRW		BY: TAMMY W. 06/12/09 SHEET 1 OF 2	



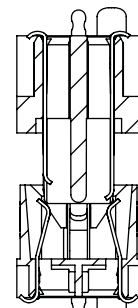
RECOMMENDED STENCIL LAYOUT



RECOMMENDED PCB LAYOUT



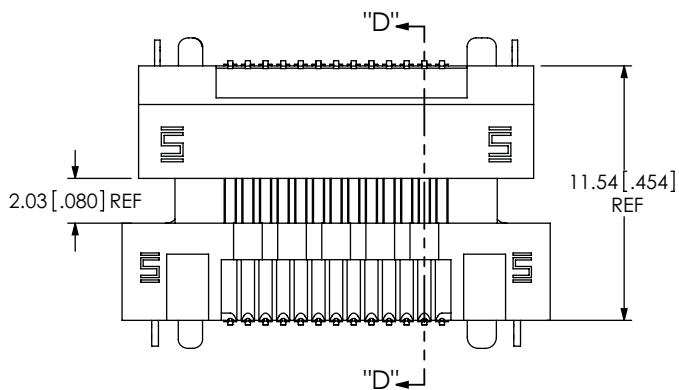
LATCH ENGAGING VIEW



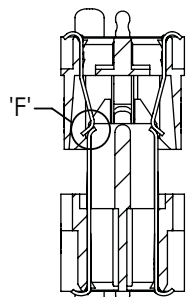
SECTION "E"-"E"
SCALE 3 : 1



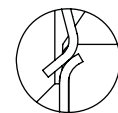
DETAIL 'C'



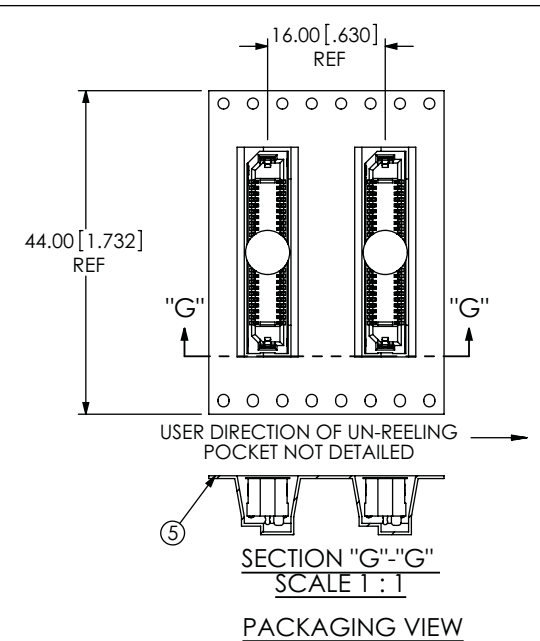
PIN ENGAGING VIEW



SECTION "D"-"D"
SCALE 3 : 1



DETAIL 'F'
SCALE 8 : 1



SECTION "G"-"G"
SCALE 1 : 1

PACKAGING VIEW

<p>PROPRIETARY NOTE</p> <p>THIS DOCUMENT CONTAINS INFORMATION CONFIDENTIAL AND PROPRIETARY TO SAMTEC, INC. AND SHALL NOT BE REPRODUCED OR TRANSFERRED TO OTHER DOCUMENTS OR DISCLOSED TO OTHERS OR USED FOR ANY PURPOSE OTHER THAN THAT WHICH IT WAS OBTAINED WITHOUT THE EXPRESSED WRITTEN CONSENT OF SAMTEC, INC.</p>	<p>520 PARK EAST BLVD, NEW ALBANY, IN 47150 PHONE: 812-944-6733 FAX: 812-948-5047 e-Mail: info@SAMTEC.com code: 55322</p>	
	<p>SHEET SCALE: 4:1</p>	<p>DESCRIPTION: .8MM EDGE RATE SOCKET ASM</p>
<p>DWG. NO. ASP-148422-01</p>		
<p>BY: TAMMY W. 06/12/09</p>		<p>SHEET 2 OF 2</p>