


Software Updates

[TRACE32 Online Help](#)

[TRACE32 Directory](#)

[TRACE32 Index](#)

TRACE32 Technical Support	
Software Updates	1
About this Document	2
New subdirectory structure	2
WINDOWS Host Based vs. WINDOWS Device Based Updates	2
Do you have a valid Software License Key?	4
The LICENSE Command	4
The Temporary License Key	4
Update of the Host Driver Software	5
PODBUS PARALLEL INTERFACE/ ISA Card	5
USB Interface	5
Troubleshooting	6
Conflicts with Regards to the Software Version	6
Conflicts with Regards to the Version of the Host Driver Software	6
Conflicts with Regards to the Version of the Executable and the other Files	6
Serial Numbers	7
TRACE32-ICD (Debugger)	8
TRACE32-ICD (ROM Monitors)	9
ROM Monitors for Serial Access (Ethernet Address)	10
ROM Monitors for Serial Access (USB Dongle)	11
TRACE32-FIRE	12
TRACE32-ICE	13

About this Document

This document provides tips on how to install an internet or email based TRACE32 software update.

Both updates are not full installations. Please perform a TRACE32 Software CD based full installation before you unpack the update archive.

By unpacking the update archive the most important TRACE32 system file are overwritten.

New subdirectory structure

The internal subdirectory structure of the TRACE32 software update packages has been changed since software version November 2010.

Now the **TRACE32 executables are inside a subdirectory** `bin\<operating_systemtype>`
e.g. `bin\windows64`.

For older installation the executable must be moved manual to the TRACE32 system directory e.g. `C:\t32` or the shortcut property must be corrected.

NOTE:	We recommend to modify the shortcut property, due to the fact that this kind of subdirectory structure will be used from the installer in the future, too.
--------------	--

WINDOWS Host Based vs. WINDOWS Device Based Updates

If you use the executable `t32w95.exe` to start your TRACE32 device, then a **WINDOWS Device Based** software update is required. In all other cases the **WINDOWS Host Based** software update is the correct one.

If you use a PODBUS ETHERNET CONTROLLER (PODETH) and your executable is `t32w95.exe`, it is recommended to move to a **WINDOWS Host Based** software. The name of the executable is `t32m<cpu>.exe` (e.g. `t32marm.exe`) then. If your PODBUS ETHERNET CONTROLLER (PODETH) is older then June 2001 a firmware update is necessary.

The firmware update is available on the TRACE32 Software CD in the directory:

demo\etc\hardware\scu_firmwareupdate.cmm

If you don't have a newer version of the TRACE32 Software CD please contact support@lauterbach.com to get the files for the firmware update.

Run the firmware update before you unpack the most current version of the TRACE32 software. Enter

```
DO scu_firmwareupdate.cmm
```

in the command line of a running TRACE32 system.

Do you have a valid Software License Key?

The most current update of the TRACE32 software can only be installed if:

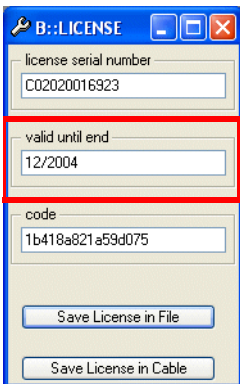
- The software guarantee for the development system is still valid. A software guarantee exists for 1 year after the purchase of the system.
- A valid software maintenance contract exists for the TRACE32 system.

The LICENSE Command

You can check if you can install the most current version of the TRACE32 software without any license problem by entering:

LICENSE

to the command line of a running TRACE32 system.



The field **valid until end** shows you how long your software license key is valid

If your TRACE32 software is older than April 2002, the LICENSE command is not available. Please refer to

<http://www.lauterbach.com/updates.html>

and read the [TRACE32-ICD \(Debugger\)](#).

The Temporary License Key

If your software license key is no longer valid, but you want to install the most current TRACE32 software to test its improvements, please save your installation before you unpack the update archive.

To test the most current TRACE32 software, you can get a temporary license key valid for 1 month from:

<http://www.lauterbach.com/cgi-bin/tmplicense.cgi>

Please use the license serial number displayed in the LICENSE window to get the temporary key.

Update of the Host Driver Software

PODBUS PARALLEL INTERFACE/ ISA Card

A update of the host driver software is necessary if WindowsNT/Windows2000/Windows XP is used together with a

- PODBUS PARALLEL INTERFACE (PODPAR)
- ISA card (PODPC)

Run the batch

```
instpbi.bat
```

after you performed the software update. Administrator rights are required to run this batch.

USB Interface

If the most current TRACE32 software asks you to update the USB driver proceed as follows (Example for Windows XP/English version):

Control Panel -> System -> Hardware -> Device Manager -> Trace32 Devices

Select **Lauterbach PODBUS USB Controller**. In the **Lauterbach PODBUS USB Controller Properties** window select **Drivers**, and then **Update Drivers ...**

The file name for the USB driver is `t32usb.inf`.

Conflicts with Regards to the Software Version

A conflict with regards to the software version might occur, if the TRACE32 software for more than one processor architecture is installed in the same TRACE32 system directory.

Since a software update overwrites all files that are used from all processor architectures in common, it is recommended to perform a software update for all architectures. Otherwise the start of the software for a not-updated processor architecture might result in a version conflict, since the used TRACE32 files don't match.

Please be aware, that in this case a valid software guarantee/software maintenance contract is needed for all used TRACE32 systems.

Conflicts with Regards to the Version of the Host Driver Software

A conflict with regards to the version of the host driver software might occur if WindowsNT/Windows2000/Windows XP is used together with a

- PODBUS PARALLEL INTERFACE (PODPAR)
- ISA card (PODPC)

and the TRACE32 software for more than one processor architecture is installed on the PC.

Please update the TRACE32 software for all installed processor architectures. Otherwise, if the host driver software has changed in the most current TRACE32 software, the PC needs to be rebooted every time a previous version of the host driver package is used by a not-updated processor architecture.

Please be aware, that in this case a valid software guarantee/software maintenance contract is needed for all used TRACE32 systems.

Conflicts with Regards to the Version of the Executable and the other Files

The software update doesn't contain a config file. If you create a copy of the original config file, please don't forget to adapt the SYStem directory in the config file.

```
OS=  
ID=T32  
SYS=<new system directory>  
tmp=C:\temp
```

Otherwise the version of the executable doesn't match with the rest of the TRACE32 files.

Serial Numbers

Please check the field *license serial number* in the **LICENSE** window.

The serial number consists of the device identifier

Device Identifier	
C	TRACE32-ICD
F	TRACE32-FIRE
I	TRACE32-ICE
M	ROM Monitors for serial access licensed via the ethernet address of the host.
D	ROM Monitors for serial access licensed via a USB dongle
T	Temporary license for all TRACE32 tools

plus a 11 digit number.

TRACE32-ICD (Debugger)

The expiration date for the software guarantee is also implicitly part of the serial number of TRACE32-ICD, please look at:

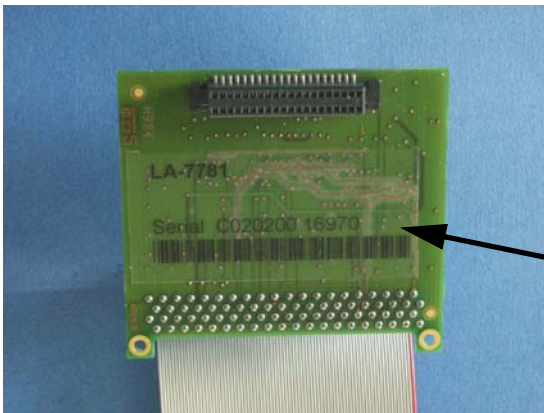
- the serial number of the debug cable



The **license serial number** for TRACE32-ICD has to start with a **C** (e.g. **C02020016970**). If the serial number on your debug cable doesn't start with a **C**, please add it.



- the serial number on the bottom of the NEXUS adapter



The first 6 digits of the serial number represent the delivery date.

Example: **C020200** 16970 (<year><month>00)

The TRACE32-ICD system was delivered in February 2002, so the software guarantee is valid until February 2003.

If the field **valid until end** is empty when you enter the **LICENSE** command use also the first 6 digits of the license serial number to find out when your software guarantee will expire.

TRACE32-ICD (ROM Monitors)

ROM Monitor via EPROM Simulator

The serial number of the EPROM simulator is the base for the license.

The expiration date for the software guarantee is also implicitly part of the serial number of TRACE32-ICD, please look at:

- the serial number of the EPROM simulator



The **license serial number** for TRACE32-ICD has to start with a **C** (e.g. **C02060020153**). If the serial number on your EPROM simulator doesn't start with a C, please add it.

The first 6 digits of the serial number represent the delivery date.

Example:

C020600 20153(<year><month>00)

The TRACE32-ICD system was delivered in June 2002, so the software guarantee is valid until June 2003.

If the field **valid until end** is empty when you enter the **LICENSE** command use also the first 6 digits of the license serial number to find out when your software guarantee will expire.

If additional ROM monitors are bought for a EPROM simulator they are always delivered with a software license key.

ROM monitors for serial access always require a software license key. The ethernet address of the host on which the ROM monitor will be used is the base for the license.

Example:

Ethernet address:

00-10-83-FF-05-80

==> M70934005120 (Host ID)

The command

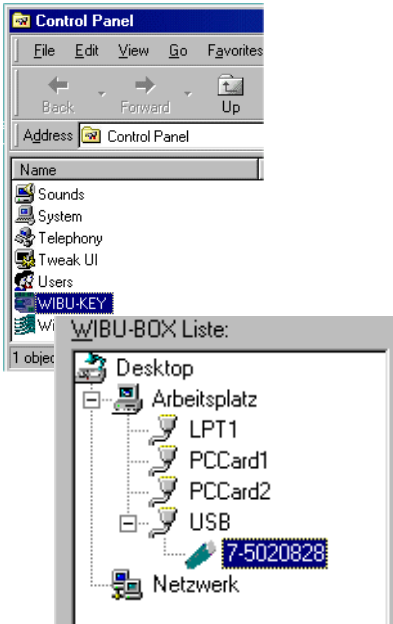
PRINT HOSTID()

can be used to check the host_ID.

For the ROM Monitors for serial access the only way to see the expiration date of the software guarantee/ software maintenance and the license serial number is to use the **LICENSE** command.



ROM monitors for serial access always require a software license key. The serial number stored in the USB dongle is used as base for the license.



Example:

Serial number in the USB dongle:

7-5020828

==> D00005020828

For the ROM Monitors for serial access the only way to see the expiration date of the software guarantee/ software maintenance and the license serial number is to use the **LICENSE** command.

For TRACE32-FIRE the only way to see the expiration date of the software guarantee/software maintenance and the license serial number is to use the **LICENSE** command.

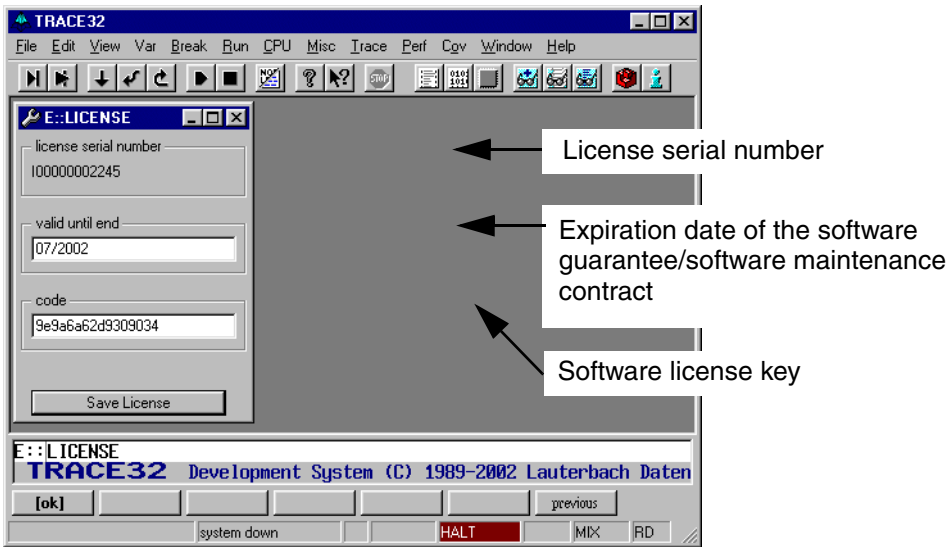
If the field **valid until end** is empty when you enter the **LICENSE** command the first 6 digits of the license serial number represent the delivery date.

Example:

F010420 00400 (<year><month><day>)

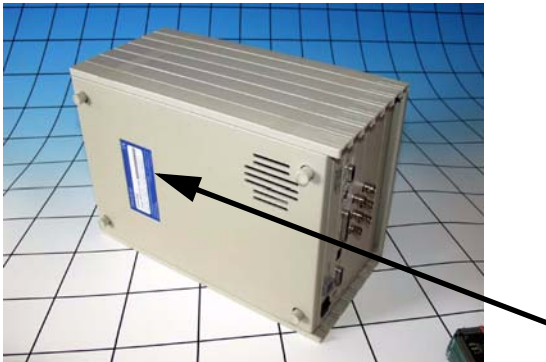
The TRACE32-FIRE system was delivered on April 20th 2001, so the software guarantee is valid until end of April 2002.

TRACE32-ICE always requires a software license key.



The expiration date for the software guarantee is also implicitly part of the serial number of TRACE32-ICE, please look at:

- the bottom of your TRACE32-ICE



The first 6 digits of the serial number represent the delivery date.

Example: **001025** 02245 (<year><month><day>)

The TRACE32-ICE system was delivered on October 25th 2000, so the software guarantee is valid until October 2001.

If the software guarantee of your TRACE32-ICE is still valid, please send an email with its serial number to franziska.grasser@lauterbach.com. Ms Grasser will mail your software license key asap.